



# SPECIFICATION SHEET

Model #:	Qty:
Project #:	
Consultant:	

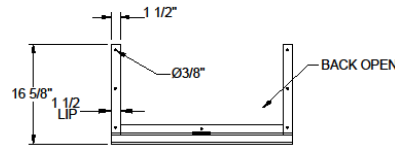
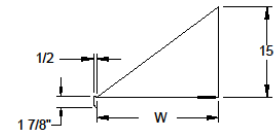
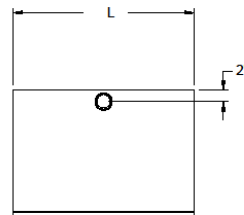
QUALITY FOOD SERVICE EQUIPMENT

## MICROWAVE SHELF



## DIMENSIONS

open back



## MATERIAL

- ◆ 18GA 300 stainless steel

## FEATURES

- ◆ Solid base wall mounted shelf
- ◆ 1-1/2" mounting back lip
- ◆ 15" angle supports
- ◆ 1 hole with grommet for appliance cord
- ◆ Includes mounting template

Model#	Length	Width
MWS-1824	24"	18"
MWS-2024	24"	20"
MWS-2424	24"	24"
MWS-2030	30"	20"